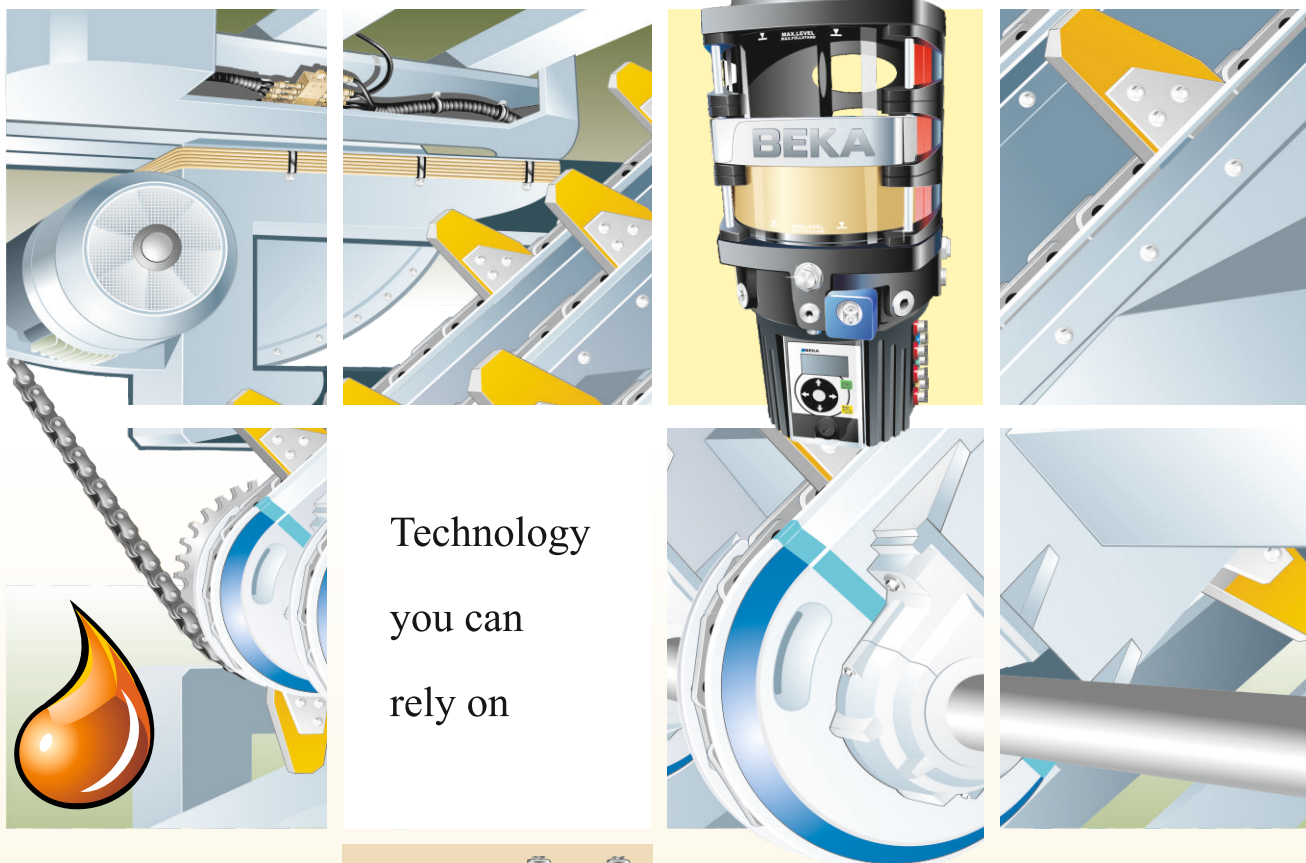
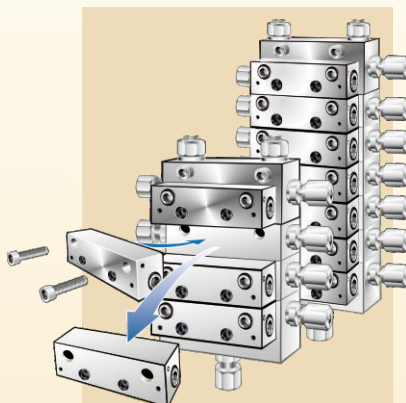


Central Lubrication Systems for Saw Mills and Log Yards



Technology
you can
rely on



- reduce wear and costs
- optimize operational reliability
- improve working safety

Central Lubrication Systems for Saw Mills and Log Yards

Disadvantages of manual greasing

With manual lubrication during a machine standstill, the lubricant is supplied just to one area of the friction point and cannot distribute itself. The bearing is more or less "overfilled" with grease until lubricant flows out. The lubricating film at the friction point is quickly used up. The consequence is a lack of lubrication. From this moment on, wear and tear increases rapidly.

A BEKA central lubrication is the solution of this problem

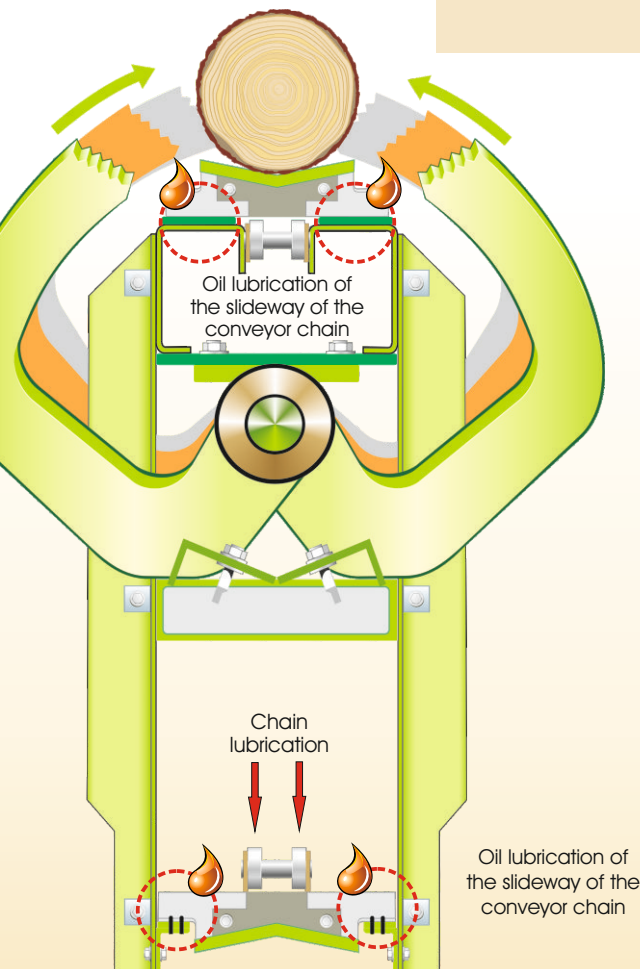
With central lubrication, the highly loaded bearing points are lubricated during operation. The lubricant reliably reaches all points of the bearing. Also bad accessible lubricating points will not be forgotten. Using a central lubrication system, the lubricating film is permanently renewed with exactly metered lubricant quantities.

This means: Drastically reduced wear and tear!

Central lubrication systems made by BEKA: Full service from a single source

BAIER + KÖPPEL produces lubrication systems since 1927. BEKA offers a comprehensive program of lubrication and maintenance systems for all applications. Our focus lies on the realization of specific solutions, which perfectly hit the demands of our customers.

Example of application:
Lubrication points at a
sorting conveyor



Effective cost reduction with an automatic lubrication system.

Example: Saw line with wood feeding with 1.600 lubrication points (3-shifts/6-days a week)

Costs for manual greasing:

1.500 grease lubrication points

2 min/point 3000 min = 50 h/week
at 35.-€/hour **€ 1.750.-/week**

100 oil lubrication points

1x per shift / 1 hour 18 hours/week
at 35.-€/hour **€ 630.-/week**

Labour costs: € 2380.-/week

Costs for automatic lubrication

**Costs for refilling of lubricants and
visual monitoring of the system**

approx. 2 h/week
each 35.-€/hour **€ 70.-/week**

Labour costs: € 70.-/week

Reduction of the labour costs per week: € 2.310.-

Lubrication in an efficient, safe and economic way

Efficient:

- Lubrication during machine is in operation
- Steady greasing with small lubricant quantities
- No additional shifts for lubrication works necessary

Safe:

- Greasing from the safety fence or fully automatic
- No greasing works in the danger zone
- No lubrication point will be forgotten

Economic:

- Significant time saving for greasing works
- Lubrication directly from economy-sized reservoirs
- No cleaning of the machine for lubrication necessary

...the key to effective maintenance and service!

Improved working safety:

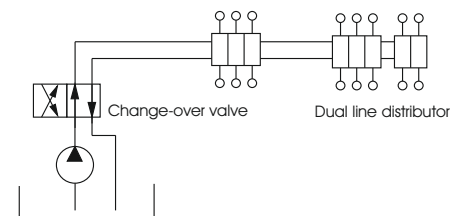
The lubrication points are supplied from outside of the safety fence - this means outside of the danger area.



Always the appropriate lubrication system

According to the application we offer our customers individually configured solutions consisting of one or several different lubrication systems:

The dual line system

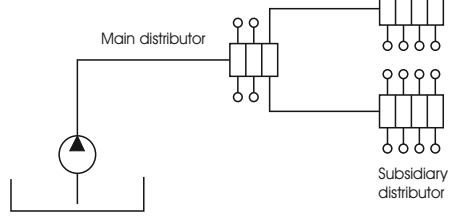


The dual line system is the classic solution for large plants as the lubricant can be transported over long distances. The lubricant is pressurized only for a short time, this minimizes the risk of bleeding out. The dual line system can be branched widely.

Typical application: machines and plants with widely separated lubrication points, like for example log yards.

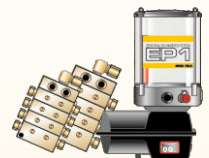


The progressive system

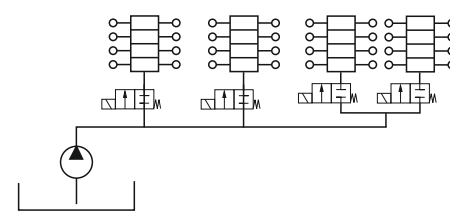


The progressive system supplies many lubrication points with just one feed line. It can be monitored easily and offers flexible extension possibilities. BEKA produces progressive systems from simple manifolds at the safety fence up to fully automatic systems.

Typical application: The progressive system is suitable for machines and systems with many lubrication points, like saw lines and profiling lines.

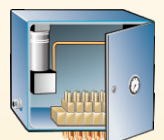


The sectional system

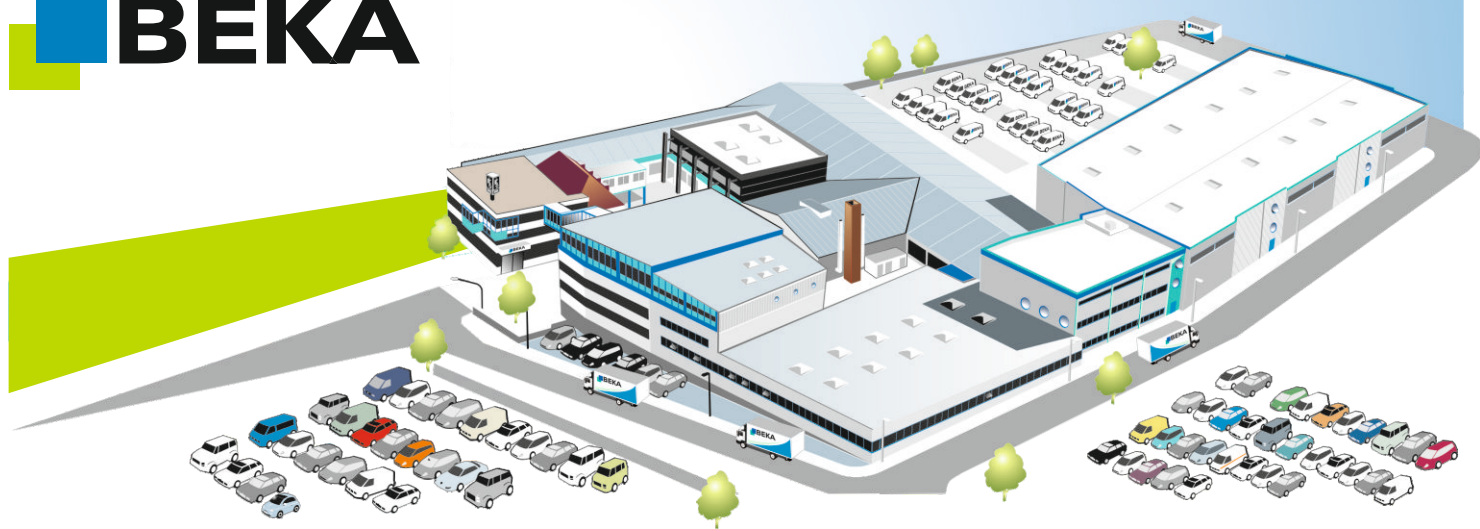


The sectional system is an extended progressive system. Large plants with many lubrication points are divided into sections. The lubricant quantities for the sections can be controlled and monitored individually. The sectional system can be extended easily.

Typical application: For large plants with many lubrication points, like saw lines and board sortings.



**Projecting, production, documentation, installation and service:
Competence from one hand!**



BAIER + KÖPPEL GmbH + Co. KG

BEETHOVENSTRASSE 14
91257 PEGNITZ/BAVARIA
GERMANY

PO BOX 13 20
91253 PEGNITZ/BAVARIA
GERMANY

fon +49 9241 729-0
fax +49 9241 729-50

e-mail beka@beka-lube.de
web www.beka-lube.de

BEKAINDUSTRIAL

BEKAMAX

BEKAMINING

BEKAFLUILUB

BEKAFOODLINE

BEKAWIND

BEKAWOOD

BEKACLEARTRONIC

BEKATRON

BEKATRAX



BEKA International

ALGERIA
BEKA LUBE ALGERIE
Zone d'activité n°25
25140 Ain-smara / Constantine
fon +213 31 97 51 00
fax +213 31 97 51 12
e-mail jet-services56@gmx.fr

CHINA
BEKA Lubrication Systems Co., LTD
Room 1803, Building 1 Sandhill Plaza,
No.2290 Zuchongzhi Road,
Pudong New District, Shanghai 201210
fon +86 21 61462988
fax +86 21 61462989
e-mail sales@bekaworld.cn

NETHERLANDS
BEKA NEDERLAND B.V.
Wagenmakerij 11
4762 AV Zevenbergen
fon +31 168 37 15 38
fax +31 168 33 83 29
e-mail info@beka.nl

SINGAPORE
BEKAWORLD Singapore PTE. LTD.
51 Changi Business Park Central 2
#07-10 The Signature
Singapore 486066
fon +65 6538 9418
fax +65 6538 9428
e-mail sales@bekaworld.sg

AUSTRIA
BEKA-Lube GmbH
Rottweg 66
5020 Salzburg
fon +43 662 43 84 40
fax +43 662 43 84 403
e-mail office@beka-lube.at

EAST TSANHAIR COMPANY LTD.
7A Building, Medicine Valley No.1,
No.9 Tianfu Street, Bio-Medicine Park,
Zhongguancun Science Park,
Daxing District, Beijing 102600
fon +86 10 83 681 526
fax +86 10 83 681 520
e-mail beka-lube@bekachina.com

KOREA
BEKAWORLD Seoul Rep Office
A-1406, Sunyudo Woolim Lions Valley
Yangpyeong-dong 5-ga
Yeongdeungpo-gu, Seoul (150-984)
fon +82 2 2038 0988
fax +82 2 2038 8934
e-mail sales@bekaworld.kr

TURKEY
BEKAMAKS MAKINA SANAYİ VE TİCARET
LTD. ŞTİ. Kucukyali Ticaret Merkezi
B Blok No. 7 Gime Mah.
34852 Maltepe / İstanbul
fon +90 216 367 34 00
fax +90 216 367 33 85
e-mail info@bekamaks.com

BELGIUM
BEKA LUBE N.V.S.A.
Demerstraat 32
BE 3200 Aarschot
fon +32 16 64 09 26
fax +32 16 64 05 48
e-mail bekalube@skynet.be

FRANCE
BEKALUBE FRANCE
4, bis Rue de l'Artisanat
89100 Paron
fon +33 386 83 39 06
fax +33 386 65 52 24
e-mail contacts@bekalube.fr

BEKA AHWON
326-1 Danggun Dong
Gunpo Si Kyungki Do Korea
fon +82 31 451 0628
fax +82 31 451 0974
e-mail jhleeahwon@yahoo.co.kr

USA
BEKAWORLD LP Atlanta
2775 North Hills Drive NE
Atlanta, GA 30305
fon +1 404 841 1133
fax +1 404 968 9433
e-mail info@beka-lube.com

CANADA
BEKA-LUBE Products Inc.
2830 Argenta Road, Unit 9
Mississauga ON L5N 8G4
fon +1 905 821 10 50
fax +1 905 858 05 97
e-mail info@beka-lube.com

ITALY
BEKALUBE s.r.l.
Via E. Rossi, 152
I-20862 Arcore (MB)
fon +39 039 618 00 88
fax +39 039 61 75 23
e-mail servizioclienti@bekalube.it

SPAIN
BEKA-LUBE IBERICA S.L.U.
C/Albasanz 14 Bis, 2ª J
28037 Madrid
fon +34 91 440 26 56
fax +34 810 520 178
e-mail beka@beka-lube.es

BEKAWORLD LP Buffalo
258 Sonwil Drive
P.O. Box 234
Buffalo, NY 14225
fon +1 905 821 1050
fax +1 905 858 05 97
e-mail info@beka-lube.com

Agencies

Argentina
Australia
Belarus
Bosnia
Brazil
Bulgaria
Croatia
Czechia
Denmark
Estonia

Finland
Great Britain
Greece
Hong Kong
Hungaria
India
Indonesia
Iceland
Ireland
Japan

Latvia
Lithuania
Luxemburg
Malaysia
New Zealand
Norway
Poland
Portugal
Romania
Russia

Serbia
Slovakia
Slovenia
South Africa
Sweden
Switzerland
Ukraine
and others

- Ⓢ BEKA Subsidiary
- Ⓡ BEKA Rep Office
- Ⓟ Partner

